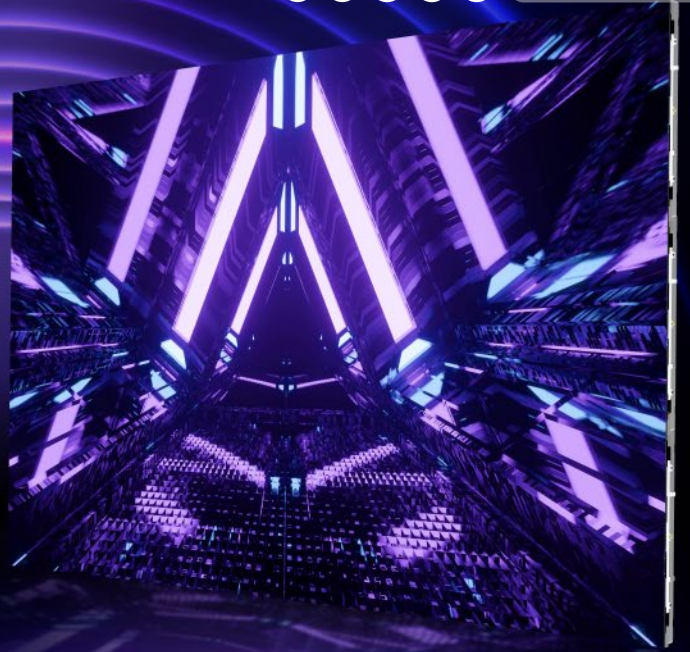


# LDC600-COB Series

Realistic visuals with vivid and vibrant colors



## Amazing compact and streamlined design

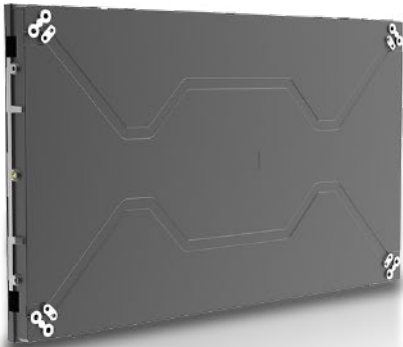
Ultra-thin 31mm cabinet, just 4.5kg in weight.

## Cutting-edge full flip-chip COB technology

Enjoy the unrivalled visual experience while providing strong protection against external impacts.

## Perfect 16:9 aspect ratio

Get maximum flexibility as you can splice FHD, UHD and FUHD screens at random!



Grayscale:  
**22 bit+** 

Colour Gamut:  
**DCI-P3** 

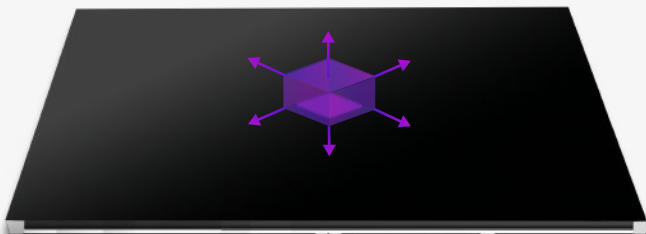
Brightness:  
**600 nits** 

Contrast Ratio:  
**1000000:1** 

## ► Dark as ink, smooth as a mirror

The module adopts a matte black finish treatment, ensuring a uniform and consistent ink-like colour.

The customized connectors combined with the magnets on the cabinet allow the module to adjust in three axes and six directions, ensuring a perfectly flat screen surface.



## ► Dual backup, multiple protection

The receiver card and power supply both support dual backups. If the signal receiver or power module fails, it will automatically switch to the backup module to ensure normal display and provide protection for continuous display.



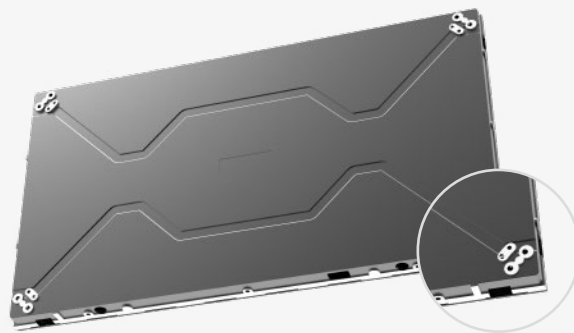
## ► Full front maintenance

Using a suction cup tool, the module can be easily dismantled and installed, improving maintenance efficiency. No maintenance channel is required, saving installation space.



## ► Unique hole positions, various installation options

The four corners of the cabinet have front and rear bi-directional mounting holes, supporting fixed mounting, wall mounting and other installation options, suitable for various installation environments.



Excellent Picture Quality



Cable Free Design



Energy Saving



Full Flip-Chip COB



Seamless Splicing



High Protection

## SPECIFICATIONS

Model	LDC60009COB-V	LDC60012COB-V	LDC60012COB-V	LDC60015COB-V	LDC60018COB-V
Pixel Pitch(mm)	P0.9375	P1.25	P1.25	P1.5625	P1.875
Resolution	640 x 360	480 x 270	480 x 270	384 x 216	320 x 180
Panel Technology	Full flip-chip COB				
Unit Size (W × H × Dmm)	600 x 337.5 x 31				
Surface Treatment	Matte black finish				
Brightness(nits)	600	600	600	600	500
Contrast Ratio	≤1000000:1				
Colour Temperature(K)	3000 ~ 9300				
Frame Rate(Hz)	60				
Refresh Rate(Hz)	3840				
Working Voltage	AC:100V~240V,50/60Hz				
Power Consumption Max(W/m <sup>2</sup> )	370	320	350	350	325
Power Consumption AVG (W/m <sup>2</sup> )	125	110	120	120	110
Viewing Angle(H./V.)	170°/170°				
Lifetime(Hours)	100000				
Operating Temp(°C)	-10 ~ +50				
Humidity Range(%RH)	10 ~ 80				
Unit Weight(kg)	4.5				
Circuit Scheme	Common Cathode	Common Cathode	Common Anode	Common Anode	Common Anode