

# LDC320XXFP

## NEXT GENERATION

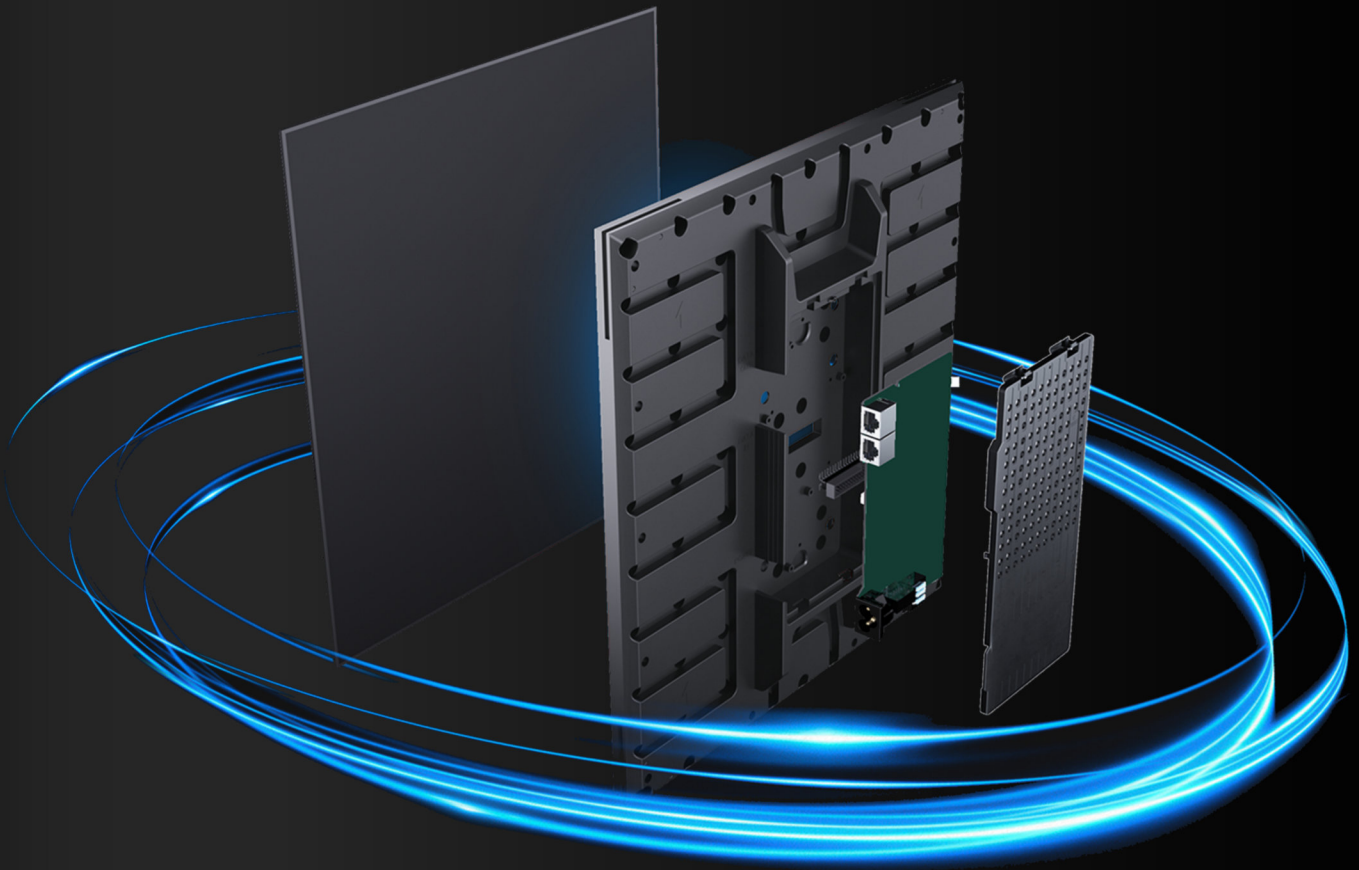


# Integrated Modular Design

8:9 Ratio

Fully Integrated Module and HUB

Cabinet Free



# Lightweight Module

## Efficient Installation

Plastic alloy construction for added strength and temperature resistant performance. Magnetic installation provides an easy to assemble screen for improved on-site efficiency

1.4kg Module Weight means less structural requirement and easier installation



# Intelligent Power Supply

High efficiency energy saving power supply dynamically adjust the output voltage to the module keeping the output voltage stable with minimal waste with a power saving of up to 60% when compared to traditional power supplies. Along with the power savings, less heat is generated, saving cooling costs and prolonging the life of the lamps





# Integrated Components

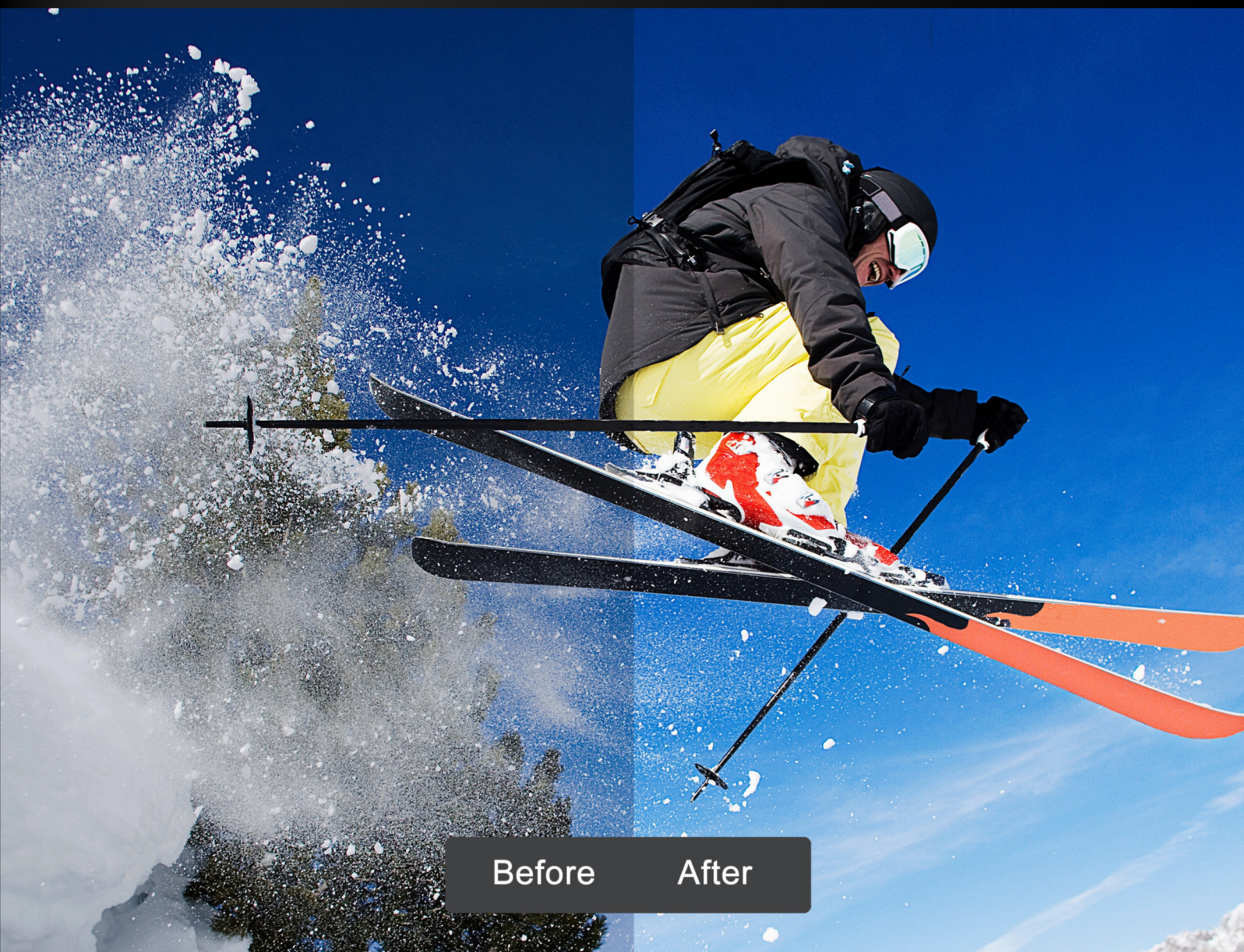
Built in 3-in-1 integrated hub board reduces wiring, enabling better stability, higher performance and simply maintenance. With less parts overall system efficiency is increased allowing for higher video performance





# Vivid Colour Display

Supporting pixel level calibration and data storage, >3840Hz refresh rate, high grayscale, grayscale compensation allows a more life-like and vivid visual experience



Before

After



# Versatile Applications

With a flexible design and super thin profile, the LDC320XXFP series can be used in a wide variety of applications. Retail, commercial, exhibition and artistic installations are easily realised



## SPECIFICATIONS

Model	
Physical Parameter	
LED Type	SMD1515
Pixel Pitch (mm )	1.87
Cabinet Size(W × H × D)/(mm)	320*360*39
Cabinet Resolution	171*192
Cabinet Weight(kg)	1.4
Cabinet Material	Plastic alloy
Module Size (W*H)/(mm)	320*360
Optical Parameter	
Brightness (nit)	100-550
Refresh Rate (Hz)	3840
Gray Scale (bit)	13-14
Color Temperature(K)	9300
Viewing Angle (H/V° )	170/170
Driving Type	1/57
Electrical Parameter	
Input Voltage(V)	220
Power Consumption(Max./Avg.)/(W/m <sup>2</sup> )	320
Environmental Parameter	
Storage Temperature(°C )	-20 ~ +60
Operating Temperature (°C )	-10 ~ +40
Storage Humidity (RH)	10-85%
Operating Humidity(RH)	10-80%
IP Rating	IP40
Maintenance	Front access

Note: Specifications are for reference only and are subject to change without notice.







# AURORA SIGNAGE

Professional | Captivating | Innovative

3/60 Grove Avenue, Marleston SA 5033  
sales@aurorasignage.com.au  
www.aurorasignage.com.au

T: 1300 841 542  
ABN: 22 620 120 836